

Collaborative Research and Education Project in Southeast Asia for Sustainable Use of Marine Ecosystems (CREPSUM)

Zainal Arifin

RCO – LIPI

RESEARCH PLANNING

18 March 2021

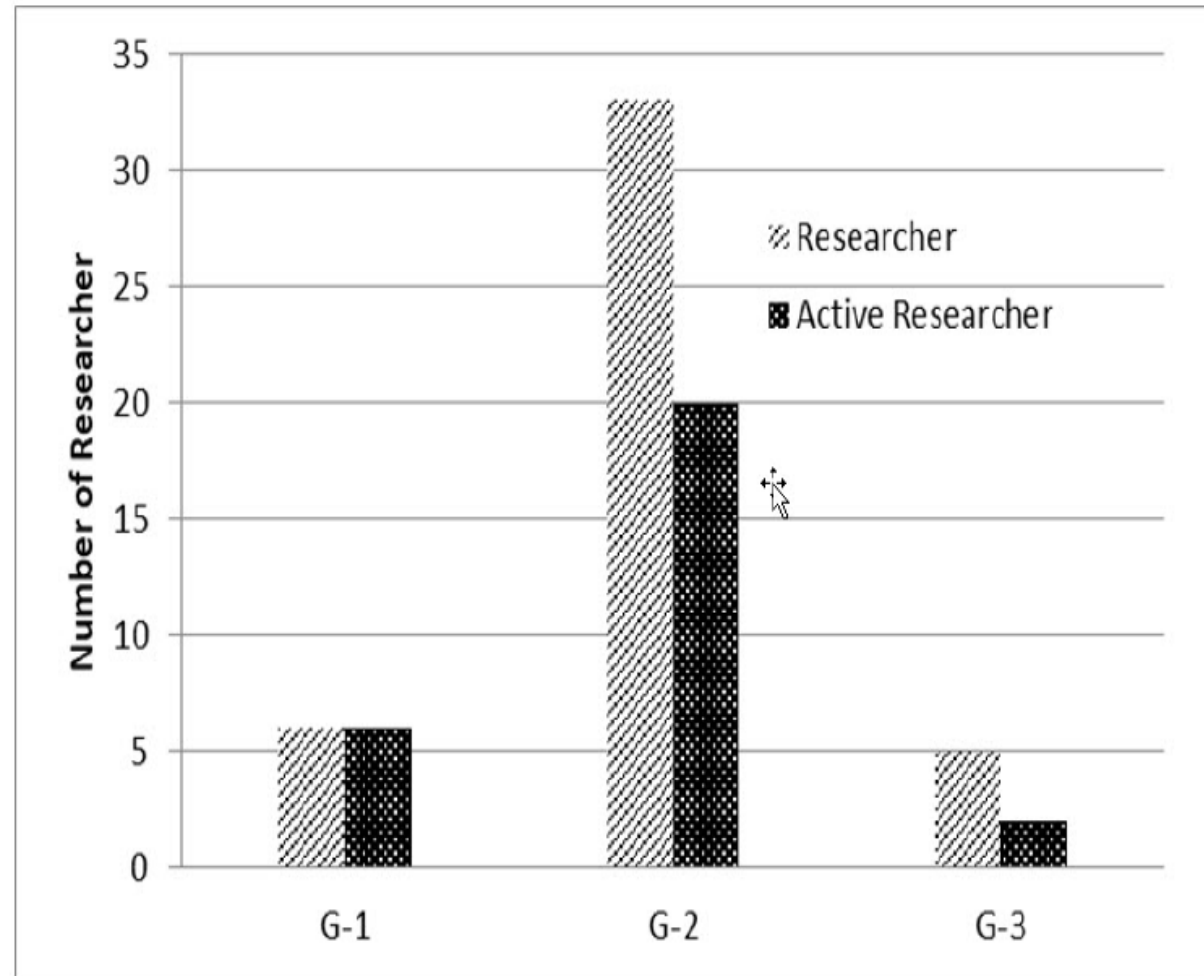
I. Member of JSPS *Coastal Research* in Indonesia

JSPS Core to Core Program

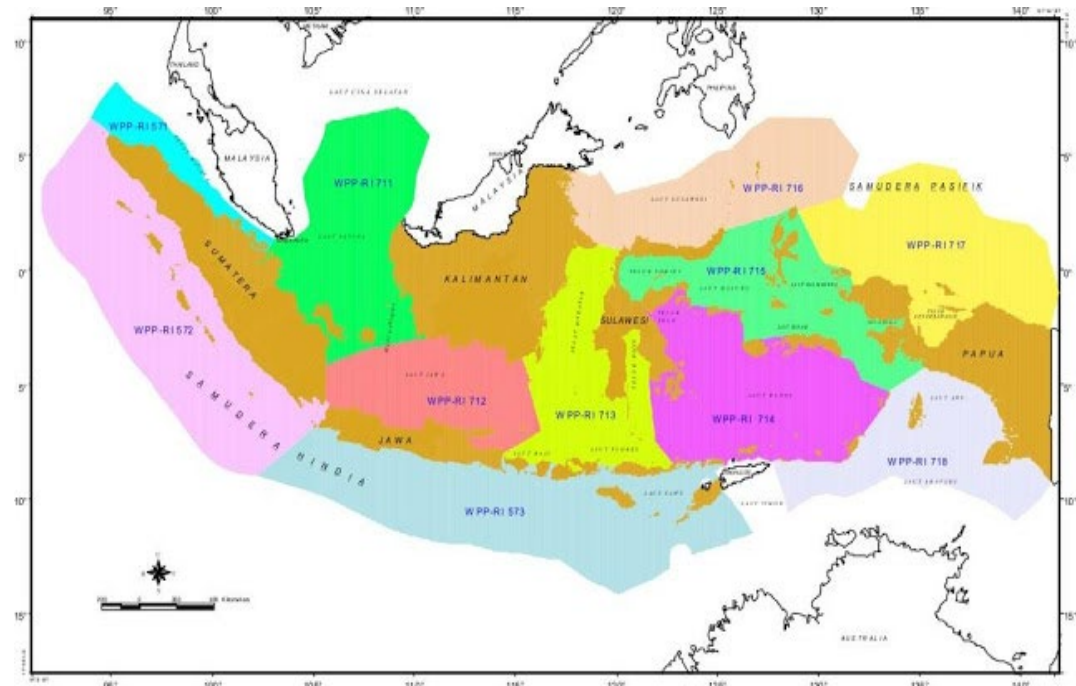
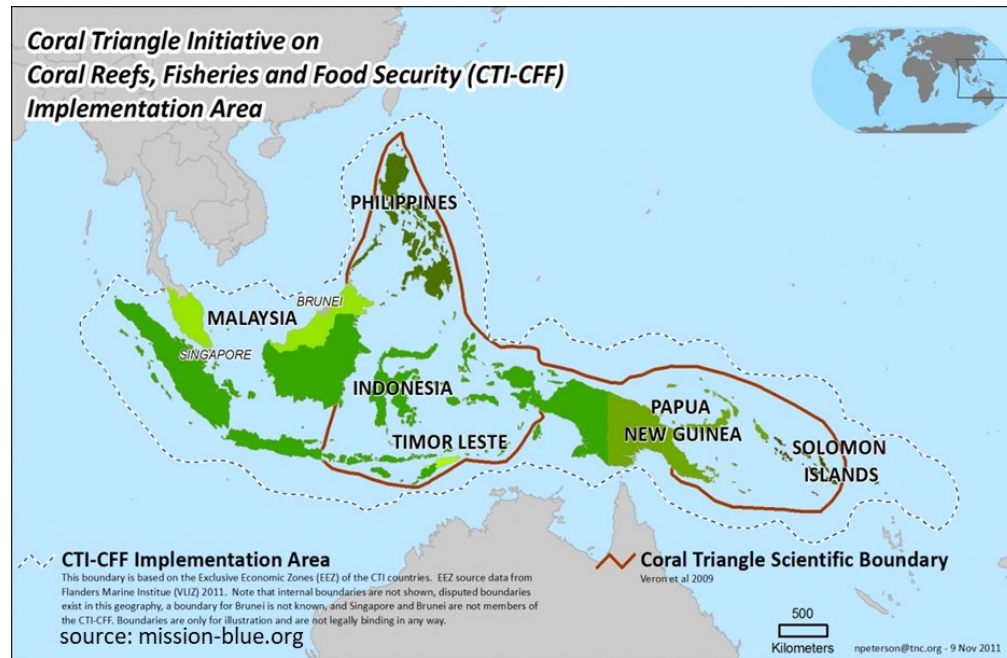
RENSEA (Research & Education Network on Coastal Ecosystem in Southeast Asia): 43 people.
→ represent 5 Research Institutes & 6 Universities

JSPS Core to Core Program

CREPSUM (Collaborative Research and Education Project in Southeast Asia for Sustainable Use of Marine Ecosystems).



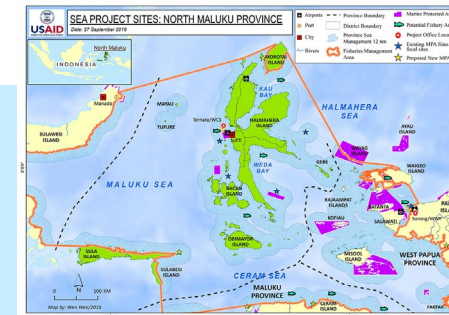
CREPSUM → CTI-CFF & 11 FMA in Indonesia



COREMAP – long term program on coral, seagrass mangrove ecosystems

LAUTRA – Laut Sejahtera (Oceans for Prosperity) → MPA, Mangrove Rehabilitation, Livelihood Coastal Communities

III. Potential Sites for joint research in Indonesia



33 Provinces
Arifin&Saito (2019)

II. Proposed Project: Sustainable use of Seribu island

- Impact of marine tourism on carrying capacity of small island
- Clean water
- Collaborative Management of Wastes from Household industry & Oil spill
- Conservation efforts by local communities
- Diversify coastal livelihood
- Behavior change (awareness and education)

Thank you